

TRAILER



BIL



CRAWLER



BÅD



MAXILIFT TIL TRAILER

1



2

Hymaco
Cranes



KRAN ML230-270

5



6



7



8



KRAN ML380



KRAN ML500



KRAN ML510L-Jib



LØFTEDIAGRAM OVER ML510L-Jib



MAXILIFT TIL BIL

18



Hymaco
Cranes



KRAN ML230-270-330-380-510



27



28



29



MAXILIFT TIL BÅD-CRAWLER-TRAKTOR-MINILÆSSER

30



Hymaco
Cranes

31



32



CRAWLER

33

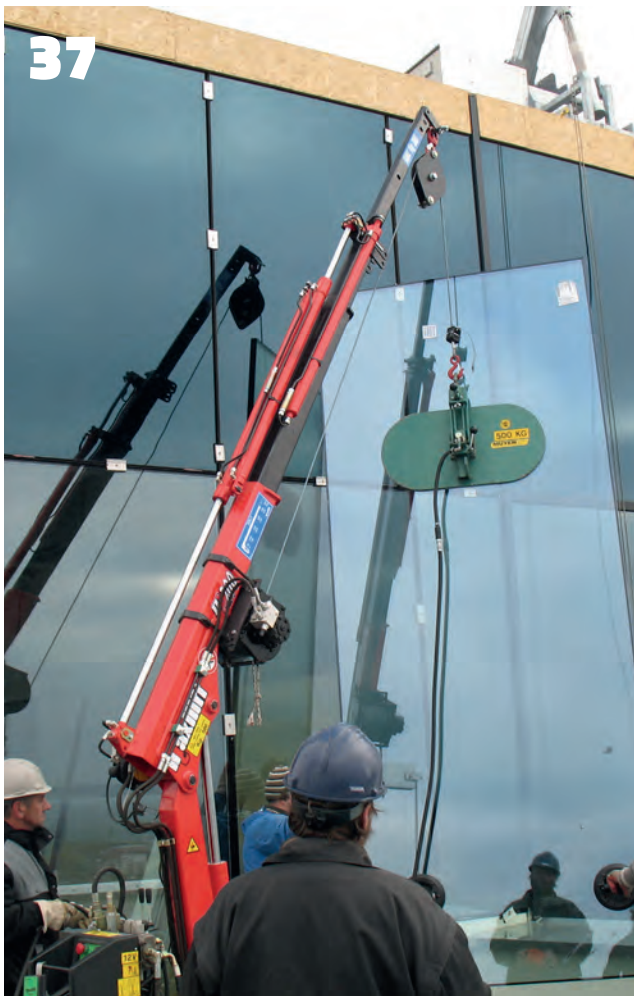


34



35





39



40



41



42



43



44

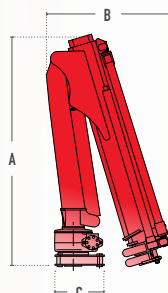


LØFTEDIAGRAM



Omfattende program af teleskopkraner, der er ideelle til montering på små- og mellemstore varebiler.
Omfattende program av teleskopkraner som egner seg til montering på små og mellomstore varebiler.

SPECIFIKATIONER SPESIFIKASJONER



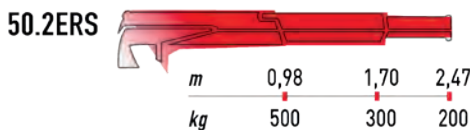
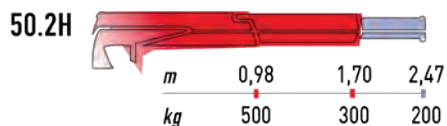
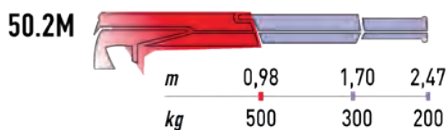
Mod.	Dimensioner Dimensioner (mm)			Løftekapacitet Løftekapacitet (kNm)	Drejevinkel Drejevinkel	Kranvægt uden støtteben Kranvægt uden støtteben (kg)	Kranvægt med støtteben Kranvægt med støtteben (kg)	Versioner Versioner				
	A	B	C					D Reduceret løftekapacitet Reduseret lastekapasitet	LC Vejecelle overvågning Begrænsende belastningscelle	LM Lastbegr. system Lastbegr. system	SC Lastbegr. system med stabilitets overvågning Lastbegr. system med stabilitetskontroll	
50	1060	510	310	5	330°	60-95	--	--	--	--	--	--
110	1210	665	315	10	330°	105-175	180-250	--	--	--	--	--
150	1320	690	310	14	330°	165-205	240-280	•	•	--	--	--
180	1320	690	310	17	330°	180-210	285-315	•	•	•	•	--
230	1420	790	310	22	360°	225-275	330-380	•	•	•	•	•
270	1420	790	310	25	360°	225-275	330-380	•	•	•	•	•
270 L	1510	1130	310	25	360°	235-290	340-395	•	•	•	•	•
330	1550	820	370	32	360°	270-345	405-480	◦	•	•	•	•
380	1630	870	370	37	360°	310-395	470-555	◦	•	•	•	•
510	1830	1380	545	48	330°	465-500	--	--	--	•	•	--
510 L	1790	1510	545	48	330°	485-565	--	--	--	•	•	--

Forklaring
Forklaring

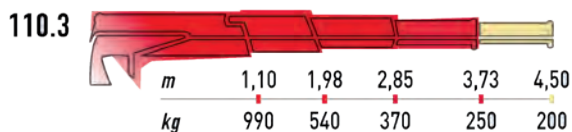
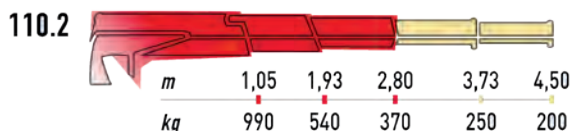
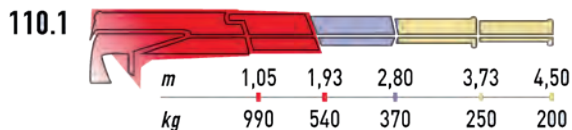
- Hydrauliske udskud
Hydrauliske forlængelser
- Standard, manuelle udskud
Standard manuelle forlængelser
- Ekstra, manuelle udskud
Valgfrie manuelle forlængelser
- ⬇ Maks. løftekapacitet 990 kg
Maks. løftekapacitet 990 kg

◦ = På forespørgsel På forespørgsel

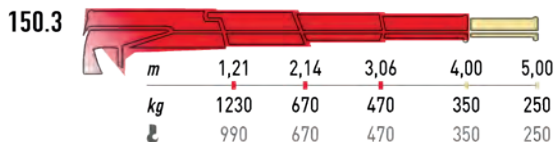
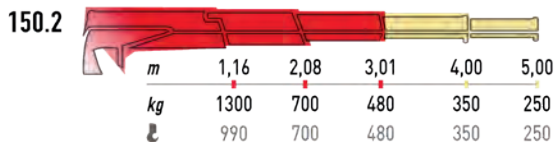
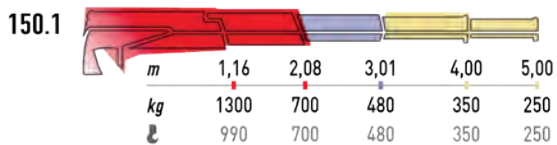
50



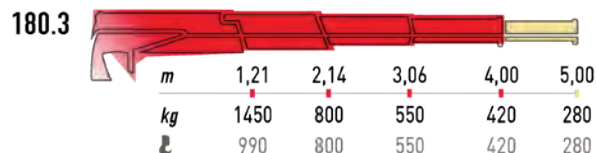
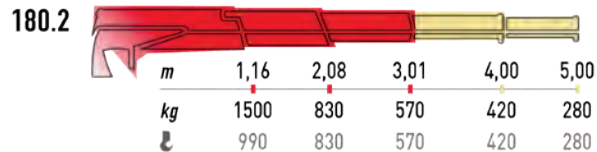
110



150




180



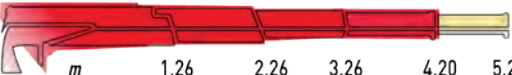
230 * MARINE

230.2



m	1,20	2,20	3,20	4,20	5,20
kg	1800	1000	680	500	350
£	990	990	680	500	350

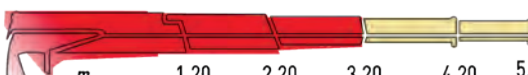
230.3



m	1,26	2,26	3,26	4,20	5,20
kg	1800	950	650	500	350
£	990	950	650	500	350


270 * MARINE

270.2



m	1,20	2,20	3,20	4,20	5,20
kg	2150	1180	810	600	400
£	990	990	810	600	400

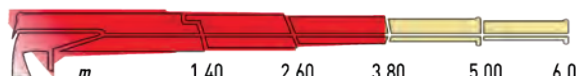
270.3



m	1,26	2,26	3,26	4,20	5,20
kg	2030	1130	780	600	400
£	990	990	780	600	400


270 L * MARINE

270L.2



m	1,40	2,60	3,80	5,00	6,00
kg	1870	1000	680	500	350
£	990	990	680	500	350

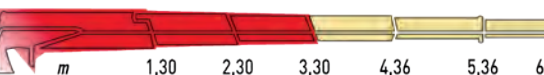
270L.3



m	1,46	2,66	3,86	5,00	6,00
kg	1770	950	650	500	350
£	990	950	650	500	350

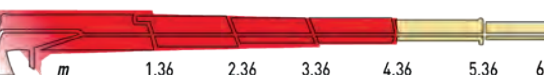
330 * MARINE

330.2




m	1,30	2,30	3,30	4,36	5,36	6,36
kg	2500	1400	1000	700	550	420
£	990	990	990	700	550	420

330.3



m	1,36	2,36	3,36	4,36	5,36	6,36
kg	2350	1350	950	700	550	420
£	990	990	950	700	550	420


330.4



m	1,43	2,43	3,43	4,43	5,36	6,36
kg	2200	1300	900	700	550	420
£	990	990	900	700	550	420


380 * MARINE

380.2



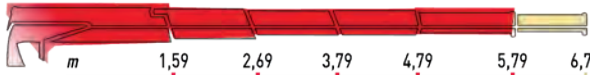
m	1,45	2,55	3,65	4,72	5,79	6,79
kg	2650	1500	1050	760	630	500
£	990	990	990	760	630	500

380.3



m	1,52	2,62	3,72	4,72	5,79	6,79
kg	2550	1450	1000	800	630	500
£	990	990	990	800	630	500


380.4



m	1,59	2,69	3,79	4,79	5,79	6,79
kg	2400	1400	980	760	630	500
£	990	990	980	760	630	500


510 * MARINE

510.2



m	1,44	2,54	3,64	4,70	5,70	6,70
kg	3300	1920	1350	1030	800	580


510.3



m	1,50	2,60	3,70	4,70	5,70	6,70
kg	3300	1920	1350	1030	800	580

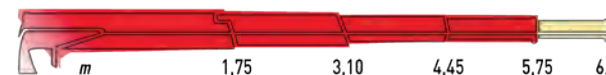
510 L * MARINE

510L.2



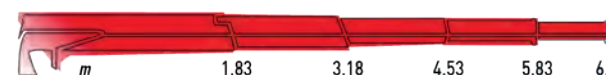
m	1,69	3,04	4,39	5,75	6,75
kg	2900	1650	1120	850	700

510L.3



m	1,75	3,10	4,45	5,75	6,75
kg	2900	1650	1120	850	700

510L.4



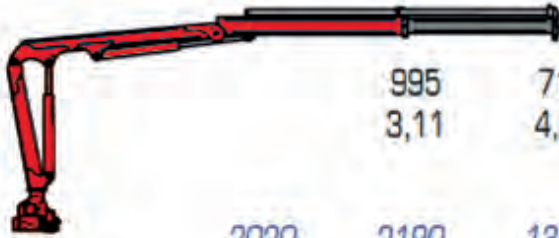
m	1,83	3,18	4,53	5,83	6,83
kg	2820	1570	1070	820	700

KRAN HMC SE 35

2190 1570 lbs
10'2" 14'3" ft

35/1

455 1000
507 17'

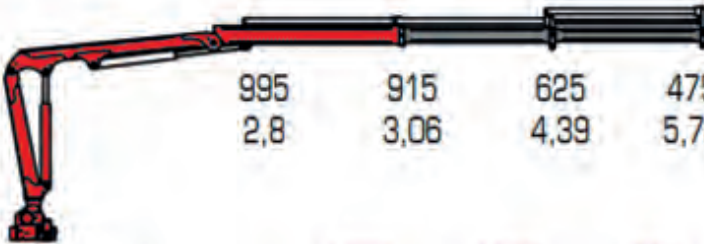


995 710 kg
3,11 4,34 m

2020 2190 1380 1050 lbs
9'2" 10' 14'5" 18'9" ft

35/2

490 1080
507 17'

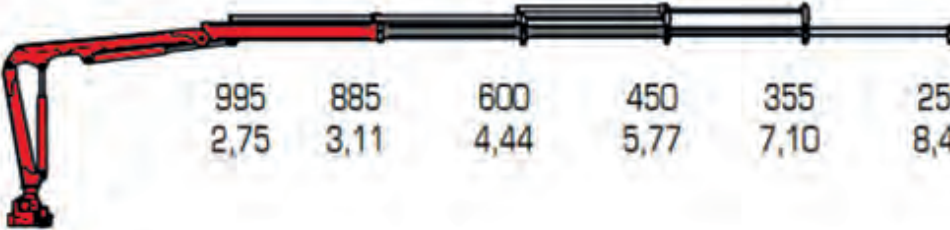


995 915 625 475 kg
2,8 3,06 4,39 5,72 m

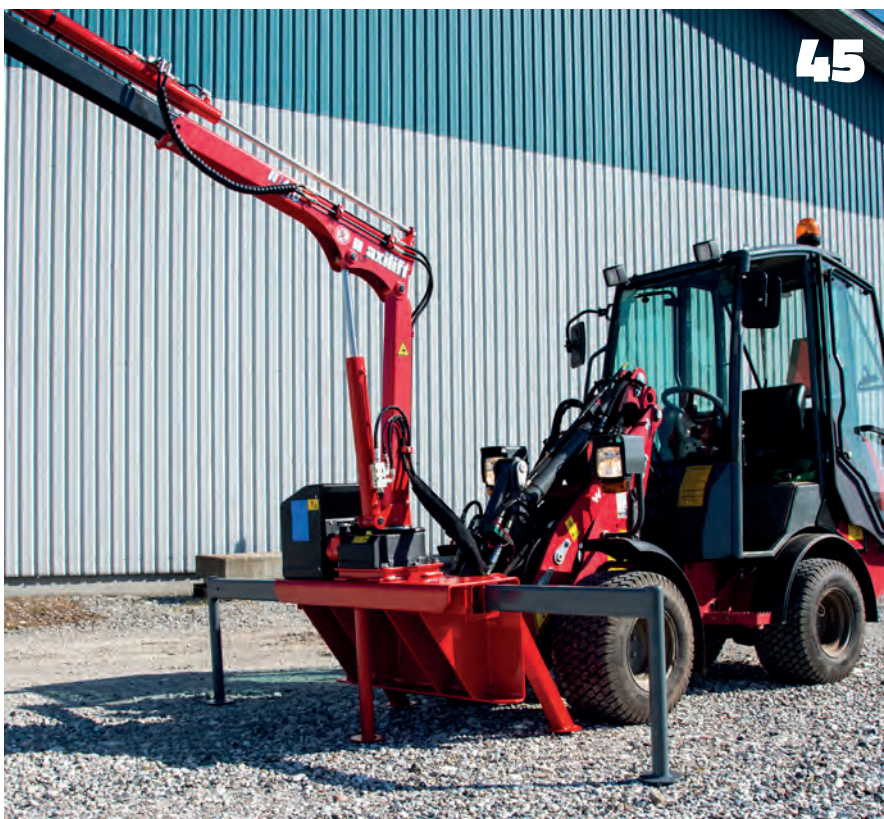
1950 1320 990 680 550 lbs
10'2" 14'7" 18'11" 23'4" 27'8" ft

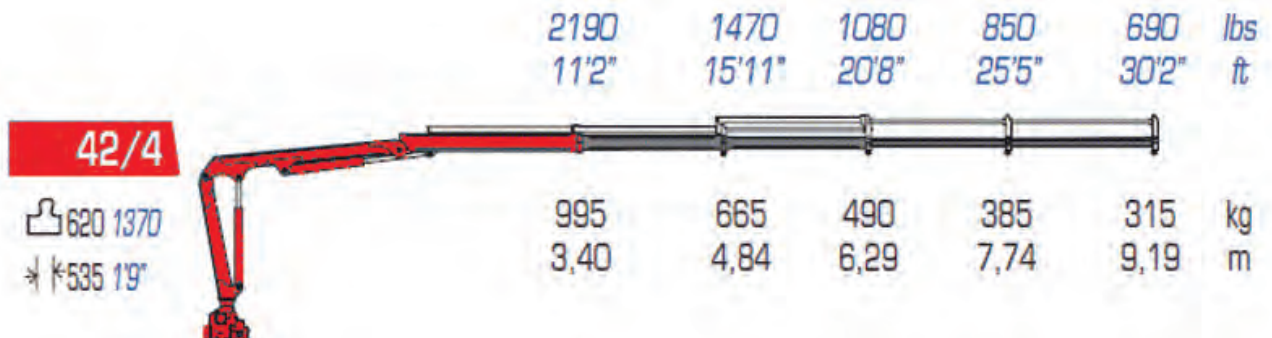
35/3

515 1140
507 17'



995 885 600 450 355 250 kg
2,75 3,11 4,44 5,77 7,10 8,45 m

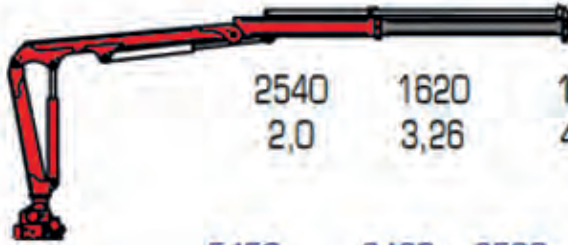




KRAN HMC SE 60

60/1

 700 1540
 630 22'



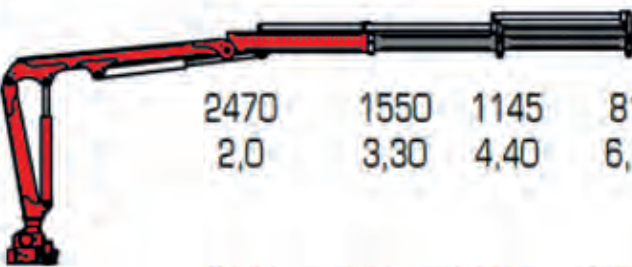
5600 3570 2670 lbs
6'7" 10'8" 14'4" ft

2540 1620 1210 kg
2,0 3,26 4,36 m

5450 3420 2520 1800 lbs
6'7" 10'10" 14'5" 20' ft

60/2

 750 1650
 630 22'

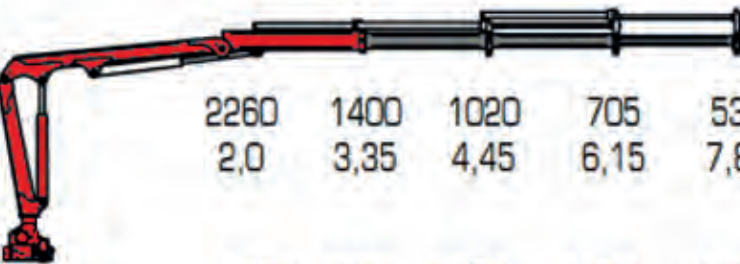


2470 1550 1145 815 kg
2,0 3,30 4,40 6,10 m

4980 390 2250 1550 1180 lbs
6'7" 10'12" 14'7" 20'2" 25'7" ft

60/3

 825 1820
 630 22'

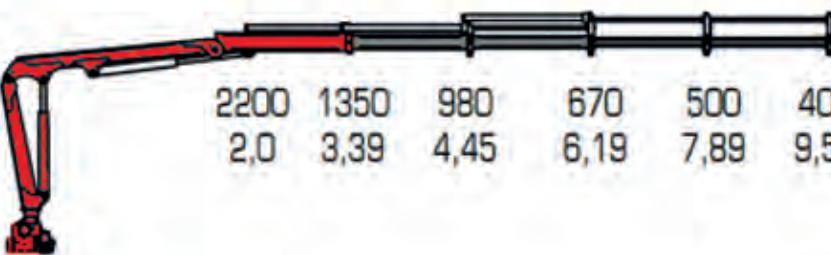


2260 1400 1020 705 535 kg
2,0 3,35 4,45 6,15 7,80 m

4850 2980 2160 1450 1100 880 lbs
6'7" 11'1" 14'7" 20'4" 25'1" 31'6" ft

60/4

 875 1930
 630 22'



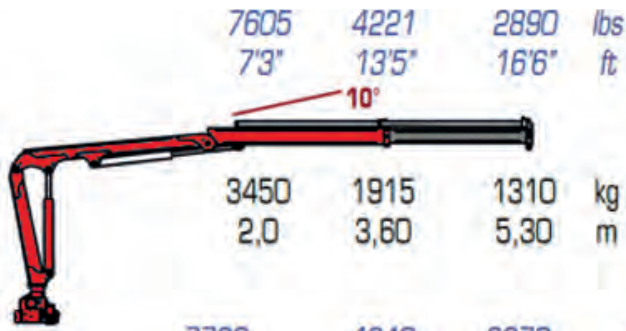
2200 1350 980 670 500 400 kg
2,0 3,39 4,45 6,19 7,89 9,59 m

48



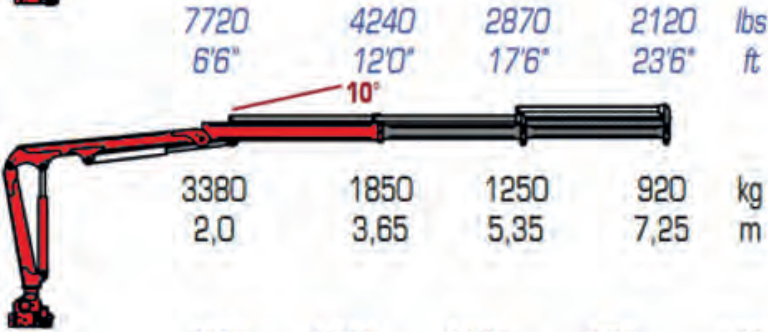
78/1

☷ 820 1760
 ✦ 627 2'1"



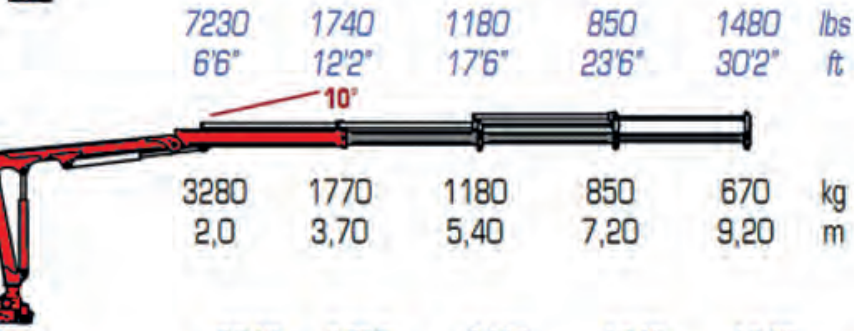
78/2

☷ 870 1981
 ✦ 627 2'1"



78/3

☷ 930 2060
 ✦ 627 2'1"



78/4

☷ 970 2134
 ✦ 627 2'1"





Ønsker de en anden model trailer, kran, udstyr, installation af kran på andet køretøj, stationær eller marine.
Kontakt os så har vi løsningen.